

MATTHEW LIU FINE ARTS

尹朝阳
新作

德玉堂画廊

2016年11月5日至2017年2月26日

地址：上海市黄浦区圆明园路115号201-203室，近北京东路

开幕酒会：11月5日星期六晚4-7点(媒体预览：3-4点)

德玉堂画廊荣幸推出常居北京的重要当代艺术家尹朝阳在本画廊的首次个展。本次展出的作品跨越多种媒介，包括布面油画、综合材质绘画、相纸水彩以及纸本素描。《尹朝阳：新作》将自2016年11月5日（星期六）开幕，展览持续至2017年2月26日。画廊将于11月5日（星期六）晚4-7点为艺术家举办开幕酒会。



尹朝阳 Yin Zhaoyang

云石山 *Mountain of Cloudy Stones*, 2016

布面油画 Oil on canvas

80 x 120 cm

德玉堂画廊, 上海市黄浦区圆明园路115号201-203室, 邮编200002

Suite 201-203, 115 YuanMingYuan Rd, Shanghai, 200002, P.R.C

+86 21 6315 1582

www.mlfinearts.com

info@mlfinearts.com

MATTHEW LIU FINE ARTS

在过去的二十多年中，尹朝阳创作了大量的极具表现力的作品，探索年轻人在毛时代之后中国迅速变化的社会环境中所感受的焦虑、忧郁及迷茫。“青春残酷绘画”是九十年代在中国年轻艺术家中很有影响力的绘画风格，而尹朝阳正是其中的代表人物。他早期最著名的作品是以现实主义风格描绘的青年的肖像——多为他的自画像或熟识的艺术家与诗人——他笔下的这些人物面带激烈或冷漠的神色，隐隐显出内心的伤痛和悲怆。

近年来尹朝阳的创作逐渐转向描绘山水，并且愈发抽象与注重概念性。他将独特的个性、内心的思考、追求与心境蕴藏在充满表现力的笔触及强烈的色彩所描绘的风景中。其中的画意与传统文人画的风格和趣味神似。艺术家曾数次游览嵩山并从其山水中深有所悟。他所创作的新作不再追求形似，而更注重气韵与笔法；比起写实，更侧重以笔触的书写性来表达内心的沉思。在新作中，尹朝阳以抽象回环的笔法游刃有余的掌控画面的节奏与气势，将深具古风的文人山水以现代的视觉语言再现出来，创造出能够贯通自然与历史的充满想象的图像。



尹朝阳 Yin Zhaoyang
嵩岩 No.12 Rocks from Songshan Mountain No.12, 2016
综合材质 Mixed media
38 x 48 cm

德玉堂画廊, 上海市黄浦区圆明园路 115 号 201-203 室, 邮编 200002
Suite 201-203, 115 YuanMingYuan Rd, Shanghai, 200002, P.R.C
+86 21 6315 1582 www.mlfinearts.com info@mlfinearts.com

MATTHEW LIU FINE ARTS

本次展出的作品中的抽象山水苍茫雄浑，细节处尽见精妙。艺术家以大胆和充满变化的笔触融合了憾人的气势与精致的细节。油彩的融合与重叠使他能够同时展现创作时瞬间的情感爆发和深思熟虑的严谨，使得最终的作品既富有视觉的冲击力又充满了微妙的感触。在《嵩岩》系列的综合材质的作品中，艺术家在其独创的技法中先以国画颜料在宣纸上作画，其后在其表面浇铸层层石膏，然后在石膏表面再次作画，最后再以刮刀和小刷将石膏表面挑拨出粗糙的纹理。这些构图和皴法般的斑驳起伏的表面体现了中国艺术精神中冷静而深邃的意趣，而他在创作这些作品中所采用的强烈的色彩和笔触又极具当代性，最终呈现的画面气势恢宏却又细腻逸致。本展也将展出艺术家的纸本新作，包括《太古山 No. 1》（2016）、《太古山 No. 2》（2016）和《寒林》（2016）。与他配色鲜艳的油画作品截然不同，这些纸本作品清新蕴藉、满溢抒情，充分体现了他独特的表现力和极具书写性的笔触。

尹朝阳 1970 年生于河南省南阳市，1996 年毕业于中央美术学院版画系。他曾在多家画廊及机构举办个展，包括德玉堂画廊，中国上海，2016 年；玉兰堂，中国北京，2015 年；河南省博物馆，中国河南，2015 年及 2011 年；蜂巢当代艺术中心，中国北京，2013 年；唐人画廊，中国香港，2010 年；广东美术馆，中国广东，2010 年；上海美术馆，中国上海，2010 年；今日美术馆，中国北京，2008 年；中央美术学院美术馆，中国北京，2004 年；北京艺术博物馆，中国北京，2001 年。他参加的重要群展包括《【绘画】PAINTING：贰拾 x 20》，保利艺术博物馆，中国北京，2015 年；《遗失的肖像》，龙美术馆，中国上海，2014 年；《东方艺术—大家，纸上专题展览—当“外省”遇到“青年”》，北京今日美术馆，中国北京，2014 年；《楼上的青年》，时代美术馆，中国北京，2010 年。艺术家现工作和生活于北京。

更多信息，请致信 info@mlfinearts.com 或致电 +86 21 6315 1582 与画廊联络。

MATTHEW LIU FINE ARTS

YIN ZHAOYANG

New Works

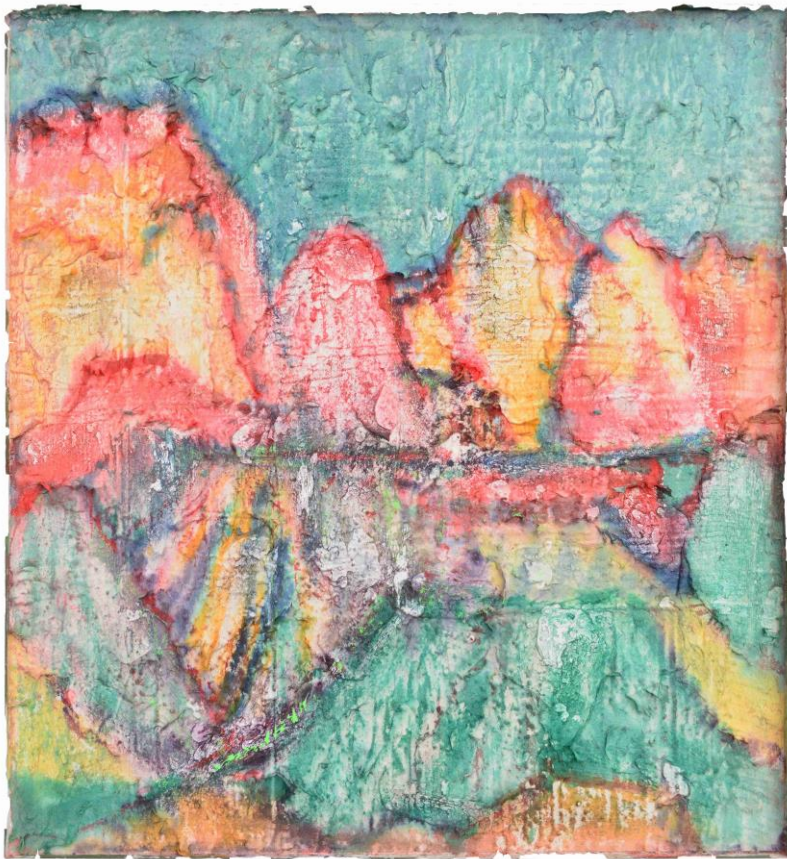
Matthew Liu Fine Arts

Date: November 5th, 2016 – February 26th, 2017

Address: Suite 201-203, 115 YuanMingYuan Rd (close to East Beijing Road)

Opening Reception: November 5th, 4 - 7pm (Media preview: 3 - 4pm)

Matthew Liu Fine Arts is pleased to announce the debut solo exhibition of the Beijing-based renowned contemporary artist Yin Zhaoyang at the gallery, bringing together a comprehensive body of works that spans through a variety of medium, including oil on canvas, mixed media, watercolor on photographic paper and ink and color on paper. Yin Zhaoyang: New Works will be on view from November 5, 2016 through February 26, 2017. The gallery will held an opening reception for the artist on Saturday, November 5, from 4-7 PM.



尹朝阳 Yin Zhaoyang

嵩岩 No.2 Rocks from Songshan Mountain No.2, 2016

综合材质 Mixed media

84 x 78 cm

德玉堂画廊, 上海市黄浦区圆明园路 115 号 201-203 室, 邮编 200002

Suite 201-203, 115 YuanMingYuan Rd, Shanghai, 200002, P.R.C

+86 21 6315 1582 www.mlfinearts.com info@mlfinearts.com

MATTHEW LIU FINE ARTS

For over two decades, Beijing-based contemporary artist Yin Zhaoyang has been creating shockingly expressive and provoking works that explore the sense of anxiety, melancholic sentiments and bewilderment that young people experienced in the swiftly changing social environment in the post-Mao China. As a representative figure in the style known as Youth Cruelty that was developed among a group of contemporary Chinese artists in mid-1990s, Yin is best known for his realistic portrayals of youths, often his self-images or artists and poets from his circle of friends, with fierce or nonchalant expression.

In recent years, Yin's works have shifted towards representations of landscape and become increasingly abstract and conceptual. With bold colors, he expresses his individuality, inner feelings, thoughts, pursuits and state of mind through his expressive brushstrokes in depicting landscape in styles and manners that are reminiscent to the traditional literati painting. His several visits to the Songshan Mountains inspired him to create works that privilege spirit and brushwork over form-likeness, and value calligraphic expressiveness over mimesis. In this new body of work, Yin Zhaoyang transforms classical landscape styles into abstract brush idioms and by manipulating their thickening and thinning calligraphic elements, creating a fused, illusionistic, pictorial surface that allowed him to master both nature and history.



尹朝阳 Yin Zhaoyang
嵩岩 No.11 Rocks from Songshan Mountain No.11, 2016
综合材质 Mixed media
55 x 76 cm

德玉堂画廊, 上海市黄浦区圆明园路 115 号 201-203 室, 邮编 200002
Suite 201-203, 115 YuanMingYuan Rd, Shanghai, 200002, P.R.C
+86 21 6315 1582 www.mlfinearts.com info@mlfinearts.com

MATTHEW LIU FINE ARTS

Boundless and vigorous, the splendid landscapes in the works in this exhibition are sensitive and dynamic in nature. The artist's bold and animated brushstrokes are effortlessly embedded with implications and wonderful subtleties. The fusion and overlapping of oil paints allows him to simultaneously present instant emotional outbreaks and deliberate thought, rendering the final images both visually intensive and full of delicate details. The mixed media works in the *Rocks from Songshan mountains* series are executed in a special technique that the artist developed himself. Yin paints with ink and color on Xuan paper, and then casts layers of plaster before painting on the rough and uneven surface again. In the end, he employs scrapers and brushes to scratch through the painted surface to create a coarse texture. The compositions and the undulations evoke the lofty and abstruse interest of the spirit in traditional Chinese art. On the other hand, the lash and intensive colors that brushstrokes are in sync with the visual language in contemporary art, which renders the final imageries imposingly magnificent with exquisite ease. A collection of new works on paper is also on view, including *Taigushan mountain No. 1* (2016), *Taigushan mountain No. 2* (2016), and *A chilly forest* (2016). In sharp contrast to the strong palette he chooses for his oil paintings, these works are pure and fresh, fully elaborating his idiosyncratic expressions and calligraphic brushstrokes.



尹朝阳 Yin Zhaoyang

寒林 *A Chilly Forest*, 2016

纸本素描 Ink and color on paper

50 x 36 cm

德玉堂画廊, 上海市黄浦区圆明园路 115 号 201-203 室, 邮编 200002

Suite 201-203, 115 YuanMingYuan Rd, Shanghai, 200002, P.R.C

+86 21 6315 1582

www.mlfinearts.com

info@mlfinearts.com

MATTHEW LIU FINE ARTS

Yin Zhaoyang was born in 1970 in Nanyang, Henan province. He graduated from the Printing Department at the Central Academy of Fine Arts in Beijing in 1996. Yin's works have been the subject of numerous solo exhibitions at Matthew Liu Fine Arts, Shanghai, China, 2016; Line Gallery, Beijing, China, 2015; Henan Museum, Zhengzhou, China, 2015 and 2011; Hive Center Contemporary Art, Beijing, China, 2013; Tang Contemporary, Hong Kong, China, 2010; Guangdong Museum of Art, Guangdong, China, 2010; Shanghai Art Museum, Shanghai, China, 2010; Today Art Museum, Beijing, China, 2008; Museum of Central Academy of Fine Art, Beijing, China, 2004; Beijing Art Museum, Beijing, China, 2001. His selected group exhibitions include, *PAINTING Twenty Multiplied By Twenty*, Poly Art Museum, China, 2015; *Lost Portrait*, Long Museum, Shanghai, China, 2014; *Oriental Art Master Exhibition on Paper When Foreign Lands Encounter the Youth*, Today Art Museum, Beijing, China, 2014; *The Upstairs Youth*, Times Art Museum, Beijing, China, 2010. The artist currently lives and works in Beijing.

For more information, please contact the gallery at info@mlfinearts.com or +86 21 6315 1582.